

## Optimise

Our most popular survey is The Steam Trap Survey !

A well executed steam trap survey will uncover significant problems, detailing which steam traps have failed or those that are not functioning to their full operating potential.

This is especially true if your systems have not had any professional or specialised attention for a period of time.

Optimise can undertake an effective and in depth survey ensuring your company benefits from increasing your systems efficiency and in turn raising your productivity and profitability.

Our Steam Trap Surveys can help to:

- Eliminate water hammer.
- Improve production
- Identify areas of improvement & potential savings to be gained.
- Maximise the efficiency of steam traps



Specialists  
in steam.



Should your steam equipment be too far away from the boilers feed tank and the steam traps struggle to return the condensate to prevent the system stalling, we would install a condense recovery unit, thus piping the steam traps locally to this unit. Using a steam pump to return the condensate.

### **A typical Steam Trap Survey would include:**

1. Boiler House Data
2. Trap Location P&ID
3. Steam System Data
4. System Queries
5. Survey Trap List
6. Defective Trap List
7. Analysis Graph & Report
8. Replacement Trap Quotation
9. Report Conclusion.

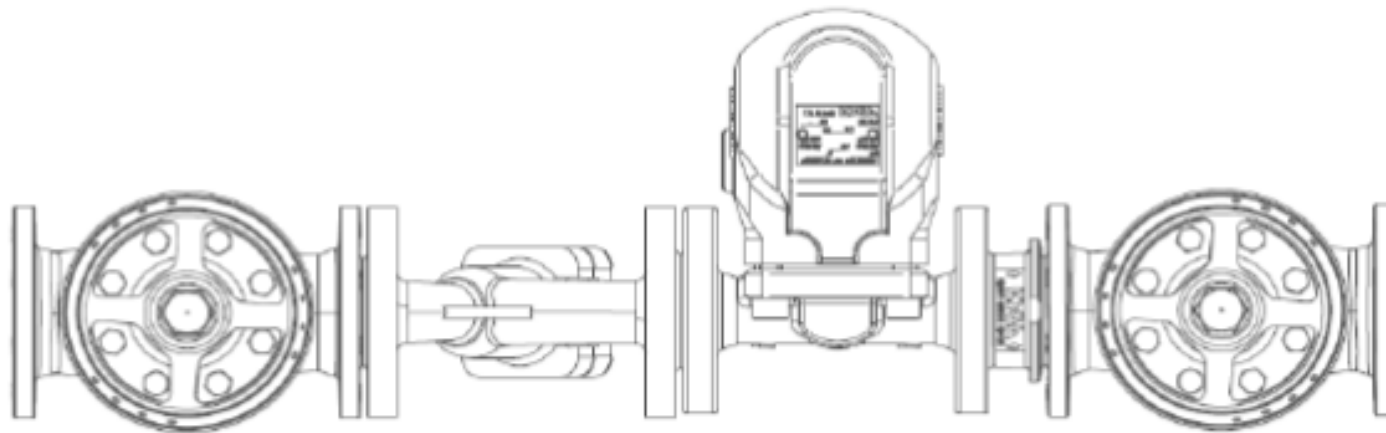
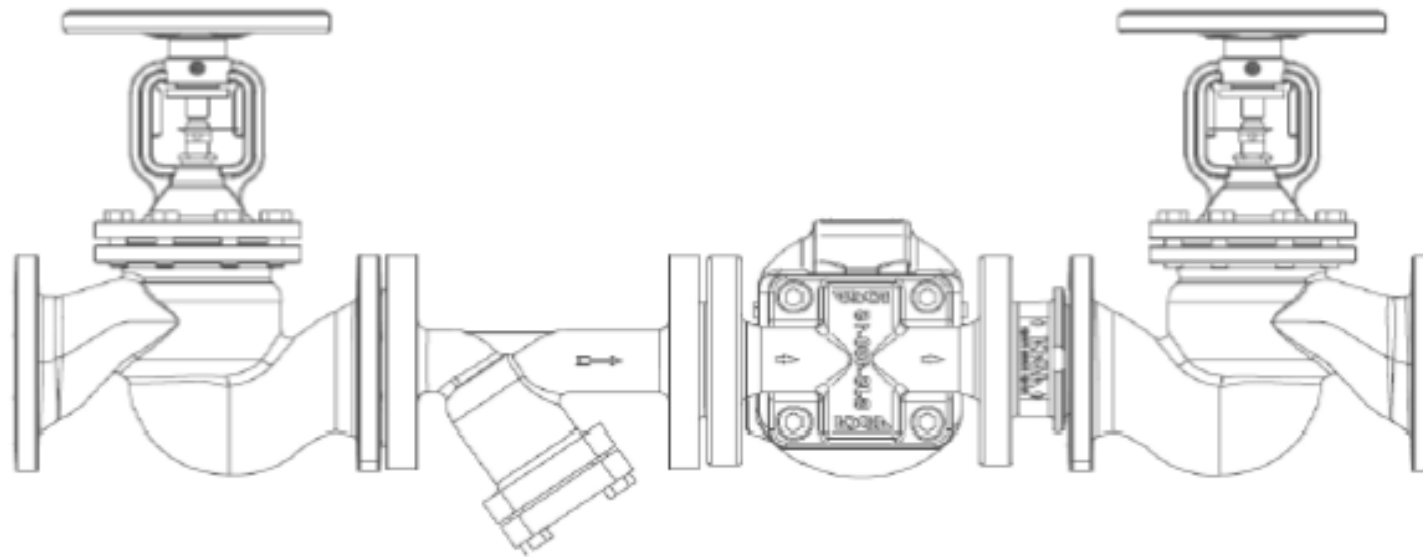


Its important for the steam system to have the correct size and type of steam trap for the application its intended to be used for.

Obviously, anything mechanical will malfunction; steam traps are no exception to that rule. Proper maintenance improves longevity and helps reduce maintenance & energy costs.

# SYSTEM DATA

## Steam Trapping



ISOLATION VALVE

STRAINER

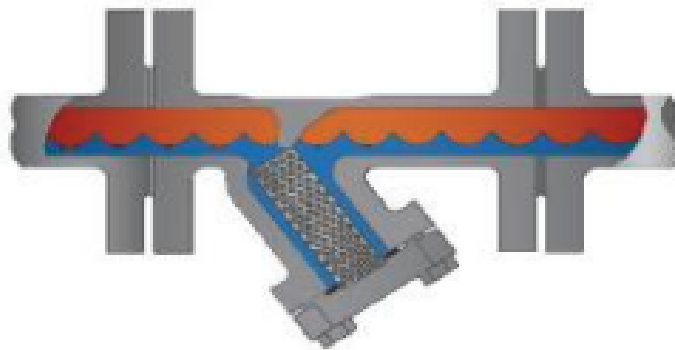
STEAM TRAP

NRV

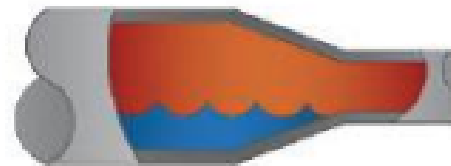
ISOLATION VALVE

## Potential Sources of Water Hammer

Strainer with Hanging Basket



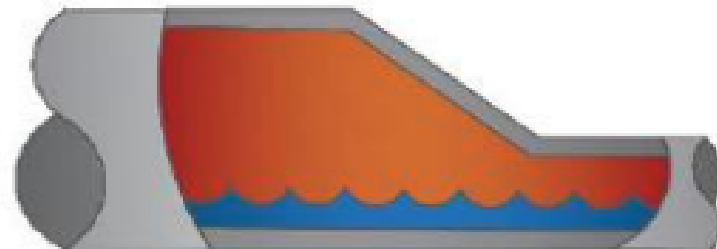
Concentric reducer



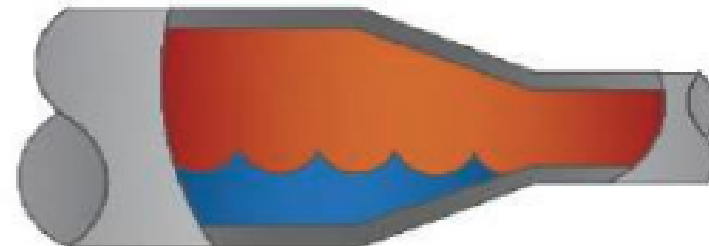
Riser



**Correct Pipe;** Eccentric Reducer



**Incorrect Pipe;** Concentric Reducer





Here at optimise we will survey your site and size the traps accordingly, having the wrong type of trap installed can cause steam hammer, damaging expensive equipment. Another condition such as stalling can completely stop your system from working flooding jacketed pans and plate heat exchangers.



**Optimise offer bespoke  
Steam Trap Surveys  
and from the report  
supplied will offer a no  
obligation quotation to  
remedy all faults found.**

SPECIALISTS IN STEAM

## **Optimise**

Improving companies  
steam requirements

## **Contact Us**

01284 811889  
[info@ohsltd.co.uk](mailto:info@ohsltd.co.uk)