

#TOWERSURE
#PASMA

When to inspect towers

As often as is necessary to ensure safety

- After assembly
- After alteration
- After any event that could affect safety
- At least every 7 days

PASMA
© 2022 - all rights reserved. Prefabricated Access Suppliers' and Manufacturers' Association Ltd (PASMA)

Who can inspect towers?

Operatives who have done the relevant PASMA user course

PASMA
© 2022 - all rights reserved. Prefabricated Access Suppliers' and Manufacturers' Association Ltd (PASMA)

The operatives training course covers inspection ALSO covers rescue plans.

Who can inspect towers?

Managers who have done a PASMA Towers for Managers course

PASMA
© 2022 - all rights reserved. Prefabricated Access Suppliers' and Manufacturers' Association Ltd (PASMA)

Manager course should be completed by office, discuss lead engineers.

#TOWERSURE
#PASMA

How to inspect a tower

You can't inspect a tower properly without the **instruction manual**.

PASMA

If not provided by the training company, they can be found on the PASMA website. Advise the office if they were not provided so this can be corrected going forward.

Inspection checklist for mobile access towers

- 1 Are the ground conditions suitable, all castor brakes locked and wheels in contact with the ground?
- 2 Is the tower level and upright and are the adjustable legs set correctly but not used to gain extra height?
- 3 Is the tower stabilised as per the instruction manual, using the correct stabilisers or outriggers, or the correct type and position of ballast, or is the tower tied in using the right type of ties in the right position?
- 4 Are the horizontal and diagonal braces positioned and secure as per the instruction manual?
- 5 Are all frames of the correct size and type, in the correct position with locking devices secured?
- 6 Are all platforms positioned correctly with trapdoor openings over the built in access and all windlocks engaged?
- 7 Do all platforms have double guardrails on all sides, fitted as per the instruction manual?
- 8 Are toeboards correctly fitted as per the instruction manual?
- 9 Is the tower the correct height for the task?

PASMA

© 2022 - all rights reserved. Prefabricated Access Suppliers' and Manufacturers' Association Ltd (PASMA)

The above checklist is a legal requirement and has to be done and recorded.

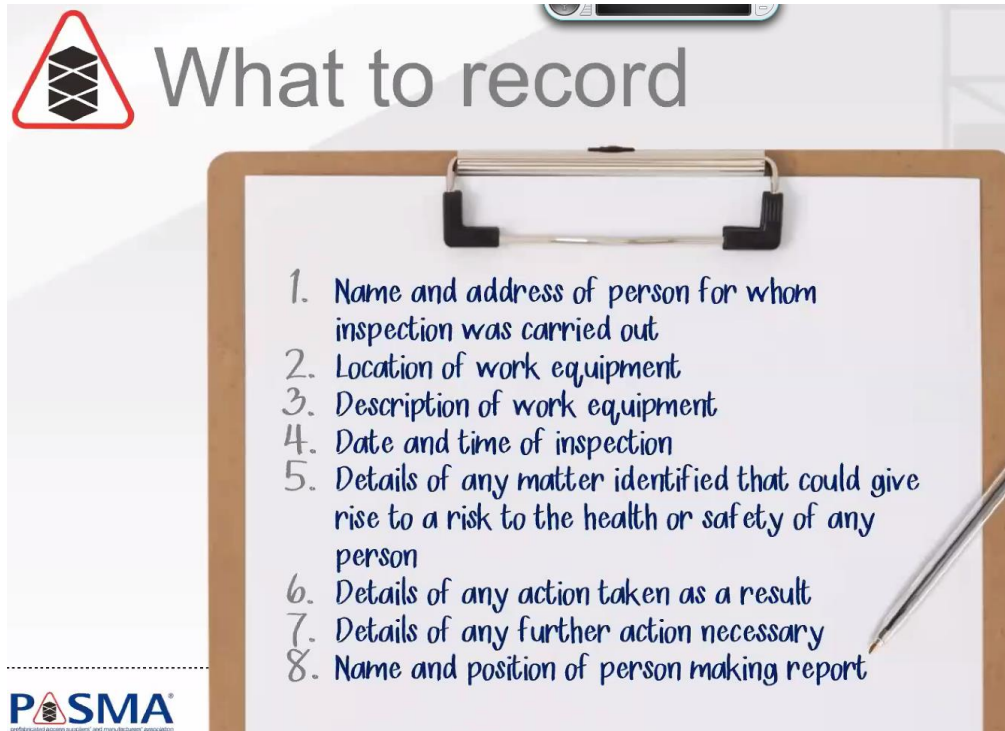
The inspection process

- 1 **INSPECT**
- 2 **RECORD**
- 3 **REPORT**

PASMA

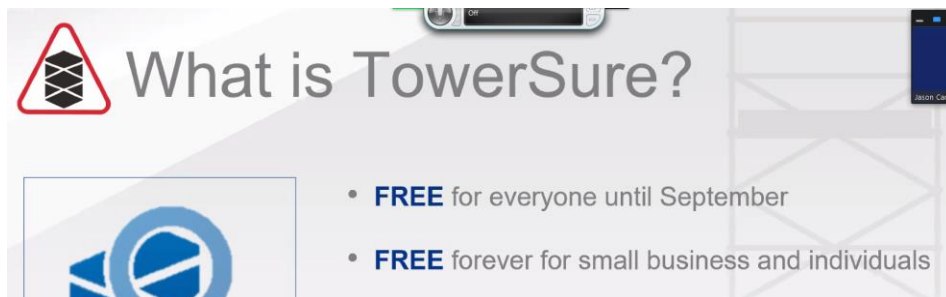
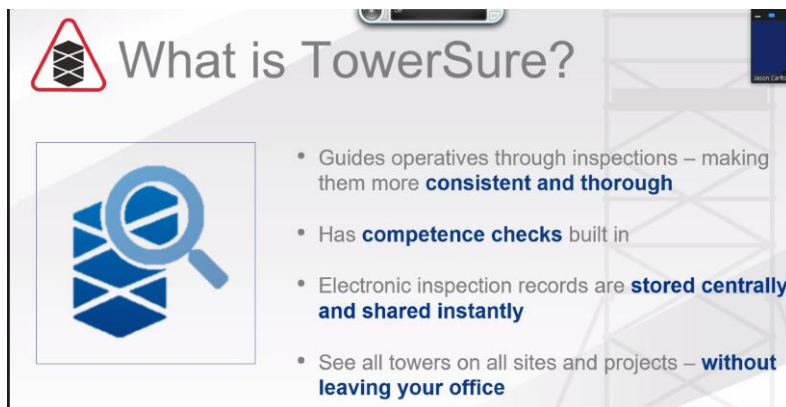
© 2022 - all rights reserved. Prefabricated Access Suppliers' and Manufacturers' Association Ltd (PASMA)

#TOWERSURE
#PASMA



Above is a legal requirement. Use Pasma Inspection record and attach to tower. Record must be kept for at least 3 months and is a legal requirement. See below as there is now a new app that can be used for the company and app downloaded to work phones and inspections done via phone.

Also, good idea to take a picture to go with the record.



Cost unknown currently but will not set bar too high as counterproductive.

#TOWERSURE
#PASMA



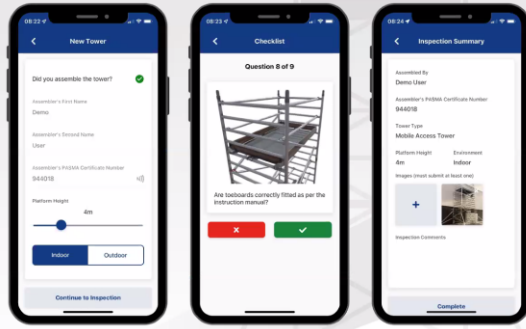
The mobile app

A simple, easy to use **mobile app** for tower operatives



Consistent and thorough inspection

Operatives follow **step-by-step PASMA-approved inspection checklists** – no more memory tests



Choose to centralise inspection

Choose to **centralise inspections** – even outsource them!



Reliable record retrieval

Store and search inspection records **electronically**



[TowerSure - PASMA](#)

Link to the Beta version will be live in September but can use now and feedback.

Will be free for individuals and small businesses.